

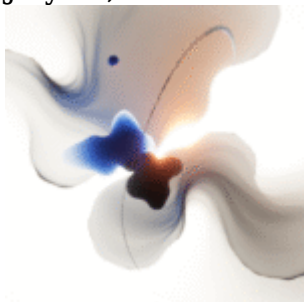


## Why DeepSeek R1's 93.3% AIME Score Just Broke Enterprise AI Model Selection Forever

### AI News & Updates

#### [Why DeepSeek R1's 93.3% AIME Score Just Broke Enterprise AI Model Selection Forever](#)

July 29, 2025



Your AI vendor just watched their pricing power evaporate while a Chinese startup rewrote the rules of model...

#### [How Cisco's \\$1B AI Infrastructure Orders Just Redefined Enterprise AI Economics—And Why Your CFO Should Care](#)

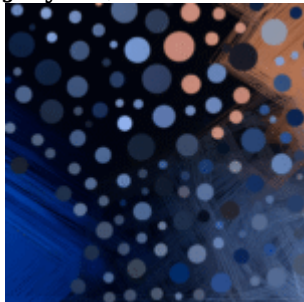
July 29, 2025



Your competitors just moved from PowerPoint AI strategies to purchase orders worth billions—and Cisco's Q3 numbers prove the...

#### [Why SAP's New AI-First ERP Strategy Just Obsoleted Your Enterprise IT Roadmap](#)

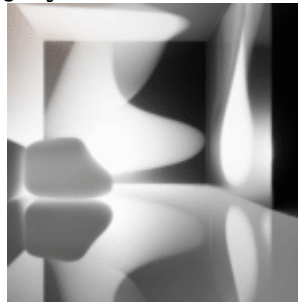
July 28, 2025



While you're debating AI strategy in quarterly planning meetings, SAP just made your current ERP system the equivalent...

#### [How the White House's AI Infrastructure Push Just Made Your Current Data Center Strategy Obsolete](#)

July 27, 2025



While you were focused on quarterly capacity planning, the White House just rewrote the rules for AI infrastructure—and...



Why DeepSeek R1's 93.3% AIME Score Just Broke Enterprise AI  
Model Selection Forever

### **Why OpenAI's Agent Mode Is Secretly Training Your Competition While You Sleep**

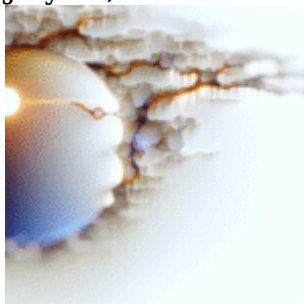
July 26, 2025



ChatGPT's new Agent mode isn't just automating your tasks—it's creating the most comprehensive corporate espionage dataset in history,...

### **Why AI Agents Are Becoming the New Enterprise Operating System (And What This Means for Infrastructure Providers)**

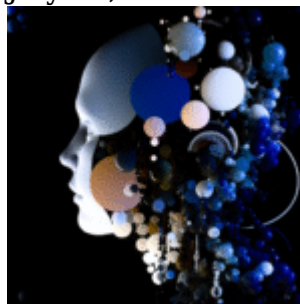
July 24, 2025



The \$15B enterprise software market is splitting into two camps: companies building agent-native infrastructure and those scrambling to...

### **Why AI Model Safety Reports Are Becoming Corporate Theater—And What Real Transparency Actually Looks Like**

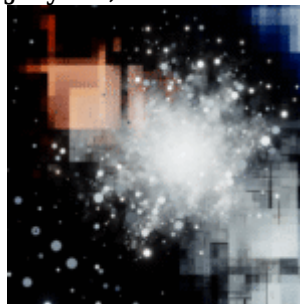
July 24, 2025



The industry's most celebrated AI safety report just revealed absolutely nothing about whether the model will leak your...

### **Why SWE-Bench Scores Are the New Market Cap Metric - The Infrastructure Reality Behind AI Model Rankings**

July 24, 2025



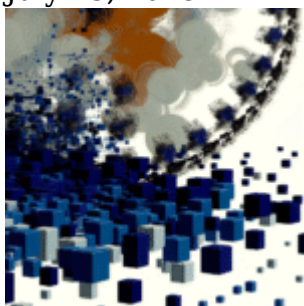
The AI model that crushed every reasoning benchmark just failed to merge a simple pull request. Welcome to...



Why DeepSeek R1's 93.3% AIME Score Just Broke Enterprise AI  
Model Selection Forever

**OpenAI-SoftBank's \$1T  
'Stargate' Infrastructure Play:  
Why Localized Data Centers Will  
Reshape AI Economics**

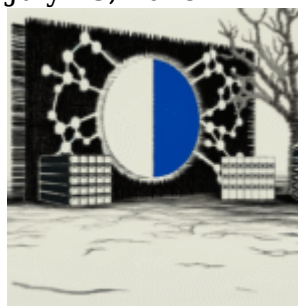
July 23, 2025



SoftBank just committed \$1 trillion to kill the centralized cloud as we know it. Their Stargate partnership with...

**Why AI startups are building  
firewalls instead of features: The  
hidden infrastructure war no one  
talks about**

July 23, 2025



Your AI startup just raised \$50M. Congratulations—now here's why you might fail anyway. While competitors chase the next...