



AI Startups & Companies

[Why Agentic AI Integration is Creating the Enterprise 'Data Dependency Death Spiral'](#)

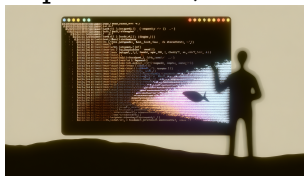
September 26, 2025



What if your most advanced AI systems aren't making your business smarter — but quietly setting you up...

[Mastering GPT-5's 'Thinking Mode': Elevating AI-Driven Developer Workflows Beyond Simple Code Generation](#)

September 8, 2025



What if your AI coding co-pilot could finally hold its own in multi-hour whiteboard debates, refactor your legacy...

[Mastering Automated and Multimodal Prompt Engineering: The New Core Competency for 2025 AI Product Teams](#)

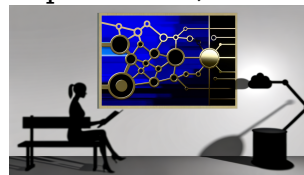
September 11, 2025



It's not just about crafting clever prompts anymore—the real winners are automating and scaling this discipline before their...

[Why Enterprise Machine Learning's 'Precise Unlearning' Problem Just Became AI Infrastructure's Biggest Competitive Moat](#)

September 3, 2025



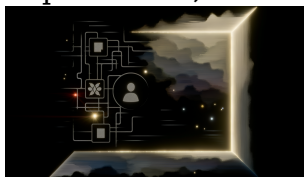
You probably think your AI systems are future-proof, but without precise unlearning, you might be sitting on a...



Why Agentic AI Integration is Creating the Enterprise 'Data Dependency Death Spiral'

[The Rise of Agentic AI in Enterprise Workflows: Balancing Autonomy and Infrastructure Complexity](#)

September 1, 2025



Are you prepared for the complexity that autonomous AI agents are sneaking into your enterprise, right under your...

[The AI Talent Poaching Arms Race: How Elite Labs Are Creating a \\$500M+ Executive Hiring Crisis That's Reshaping Startup Strategy](#)

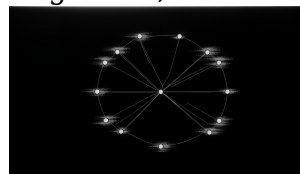
August 15, 2025



Meta just dropped \$300M on a single recruitment campaign while your AI startup's CRO search enters month 7—welcome...

[Why Enterprise AI Orchestration's Multi-Agent Coordination Crisis Is Creating the First 'Intelligence Debt' Problem](#)

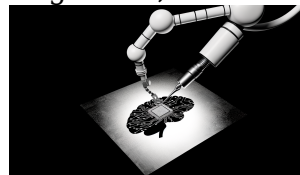
August 16, 2025



Your AI agents are building a debt bomb that compounds at the speed of machine learning—and 87% of...

[Why Enterprise Machine Learning's 'Precise Unlearning' Problem Just Became AI Infrastructure's Biggest Competitive Moat](#)

August 14, 2025



Your AI model just memorized something it legally can't remember tomorrow – and that \$500,000 retraining bill is...



Why Agentic AI Integration is Creating the Enterprise 'Data Dependency Death Spiral'

[Why Anthropic's 32% Enterprise Market Surge Just Exposed the Hidden AI Transparency Crisis That's Sabotaging Decision-Making](#)

August 12, 2025



Your enterprise just switched to Claude. But 75% of its decision-making process is now invisible to you—and even...

[Why \\$65B AI Infrastructure Buildouts Are Creating the First Enterprise 'Power-First' Data Strategy Crisis](#)

August 9, 2025



Your enterprise just lost the AI race not because of bad algorithms or slow GPUs but because your...