

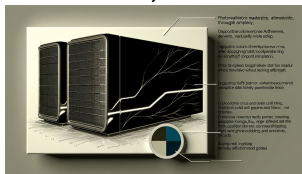


Why AI Jailbreaking Just Became an Enterprise Security Crisis Worth
\$18.5M per Incident

Artificial Intelligence

[Why AI Jailbreaking Just Became an Enterprise Security Crisis Worth \\$18.5M per Incident](#)

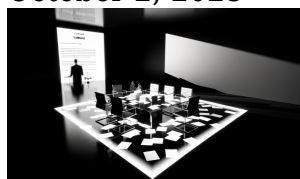
October 3, 2025



What if attackers could secretly take control of your AI systems, costing your enterprise \$18.5 million in one...

[Why California's Transparency in Frontier AI Act Reveals the Emerging Governance Crisis in AI Safety](#)

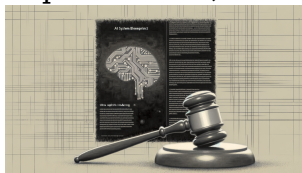
October 2, 2025



What if a single new AI law could flip the script on your company's exposure to hidden AI...

[The Practical Governance Gap: Why Translating AI Ethics Principles into Enforceable Accountability is the Next Frontier](#)

September 30, 2025



AI ethics sound great—but what if they're just empty promises? Discover the uncomfortable truth behind why most AI...

[The Silent Infrastructure Crisis: How Agentic AI is Creating Hidden Failures in Enterprise AI Security](#)

September 29, 2025



Your AI security playbook might be leaving the door wide open to silent, catastrophic breaches—and you may not...



Why AI Jailbreaking Just Became an Enterprise Security Crisis Worth
\$18.5M per Incident

Why Agentic AI Integration is Creating the Enterprise 'Data Dependency Death Spiral'

September 26, 2025



What if your most advanced AI systems aren't making your business smarter — but quietly setting you up...

Why the Shift from Benchmark Scores to Real-World Usability is Redefining AI Model Comparisons in 2025

September 26, 2025



What if everything you think you know about choosing the best AI is already outdated? In 2025, industry...

The Emerging Role of Small Language Models (SLMs) in Specialized Machine Learning Applications in 2025

September 26, 2025



Silicon Valley's obsession with big models is quickly becoming a costly liability—have you noticed the elite few racing...

Agentic AI and Hyperautomation: Navigating the Complexity of Autonomous Workflow Bots in 2025

September 25, 2025



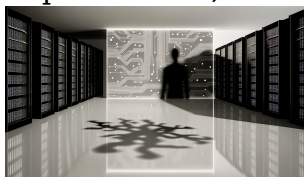
Are you prepared for AI agents that won't just follow scripts, but can independently reshape your company's critical...



Why AI Jailbreaking Just Became an Enterprise Security Crisis Worth
\$18.5M per Incident

[Why the Shift from Benchmark Scores to Real-World Usability is Reshaping AI Model Comparisons in 2025](#)

September 24, 2025



You're comparing endless AI benchmarks... but what if your "best" model choice is sabotaging your rollout? Here's what...

[The New Wave of AI-Powered Cybercrime: How Advanced AI Models Are Reshaping Threat Landscapes in 2025](#)

September 22, 2025



AI isn't just powering tomorrow's innovation—it's fueling today's most dangerous cyberattacks. Enterprises who fail to adapt are sleepwalking...