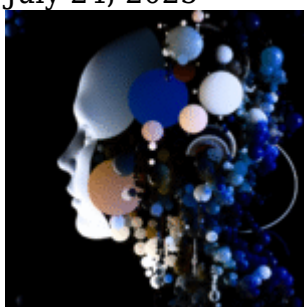




Large Language Models

[Why AI Model Safety Reports Are Becoming Corporate Theater—And What Real Transparency Actually Looks Like](#)

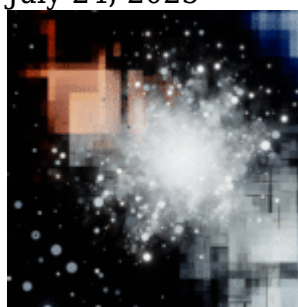
July 24, 2025



The industry's most celebrated AI safety report just revealed absolutely nothing about whether the model will leak your...

[Why SWE-Bench Scores Are the New Market Cap Metric - The Infrastructure Reality Behind AI Model Rankings](#)

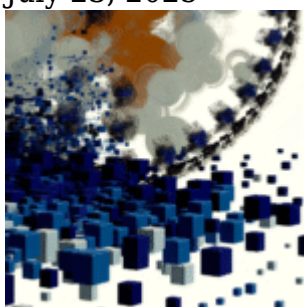
July 24, 2025



The AI model that crushed every reasoning benchmark just failed to merge a simple pull request. Welcome to...

[OpenAI-SoftBank's \\$1T 'Stargate' Infrastructure Play: Why Localized Data Centers Will Reshape AI Economics](#)

July 23, 2025



SoftBank just committed \$1 trillion to kill the centralized cloud as we know it. Their Stargate partnership with...